

# Everett Public Schools

## Enrollment Trends and Projections

### **Final Report**

Prepared by  
William L. (“Les”) Kendrick Ph.D.  
Educational Data Solutions, LLC

**February 2017**

# Introduction

This report provides an update of enrollment projections for the Everett Public Schools. The first part of the report provides a narrative of enrollment history and demographic trends with a general description of what is likely to happen in the future. The rest of the report is divided into sections (Enrollment Trends, Births, Population, and Housing) that begin with highlighted bullet points describing the key trends and matters of interest. The last part of the report presents a description of the methodology used to develop the forecast and the detailed forecast numbers.

# Enrollment and Demographic Trends

## Everett Public Schools and the Region

Enrollment in the Everett Public Schools increased by 235 students between October 2015 and October 2016. The overall enrollment was 49 students lower than last year's forecast. Elementary enrollment grew by 142 students with the biggest gain at the kindergarten level. Middle school enrollment grew by 153 students. High school enrollment saw a net loss of 60 students after growing over the past few years.

Enrollment gains over the past two years have been mostly in line with projections. This growth has been driven by continuing population gains and steady homes sales in Snohomish County and the District, as well as the larger birth cohorts in the Puget Sound that begin entering the schools in 2011. Over the last several years, enrollment growth in Snohomish County has been concentrated in a few areas and Districts. We have seen net gains in enrollment in Everett, Mukilteo, Edmonds and Lake Stevens on a fairly consistent basis. This year, however, the majority of the Districts in the County saw net gains in enrollment with more gains in the outlying regions of the County. We expect this trend to continue as the economic recovery continues to reach the outlying regions of the Puget Sound.

# Enrollment and Demographic Trends

## Everett Public Schools and the Region

The trends in the District and County as a whole are also reflected in other areas of the Puget Sound. King and Pierce County, in particular, continue to see strong net gains in enrollment, also due to larger birth cohorts and steady sales of new and existing homes. The larger birth cohorts are expected to continue driving enrollment higher in the Puget Sound over the next decade. After that time period we could see some tempering of the enrollment gains as the larger elementary classes from recent years roll up and graduate from high school. These larger graduating classes will offset some of the gains from larger kindergarten classes.

Over the past year we have also seen the impact on enrollment from the introduction of full day kindergarten throughout the region. The District's share of the County birth cohort in 2016 was the largest number we have seen since the period between 2007 and 2009. This year's kindergarten enrollment suggests that more families will enroll in kindergarten when the full day option is available. Many parents seem to prefer having a full day option for schooling, and the trend of increased enrollment at kindergarten has been present throughout the region this year. We do, however, expect net gains from kindergarten into first grade in subsequent years to drop some, as more parents enroll their children in kindergarten (due to the full day option) instead of waiting until first grade. We have made some adjustments in our forecast for this possibility but it is likely that we will need to refine these estimates over time as we gather more data.

# Enrollment and Demographic Trends

## Everett Public Schools and the Region

Similar to past years, our near term forecast is based on births, enrollment trends, and our expectations about housing sales over the course of the year. We expect new homes sales in the coming year to remain at about the same level as this past year. The number of new single family home sales in the District in 2016 is trending very close to the number we saw in 2015, suggesting that the market remains steady. It is also worth noting that 2015 and 2016 mark the best years for new home sales that we have seen over the last decade (New Home Trends data).

Our long range forecast (beyond 2017) is based on the number of homes currently in the pipeline and the expected rate of sales (or development in the case of apartments) for those homes over time. There are currently about 640 single family units either for sale or planned for future construction and sale within the District boundary area, and there are approximately 2,800 multi-family units in the pipeline. We expect just under 3,000 of these units (single family and multi-family) to be developed over the next five years with the rest following after that. There are also inactive, expired, and withdrawn projects, many of which are likely to be resurrected (or developed with new project plans) in the future. Our forecast assumes that these units will have some impact on the District's enrollment between 2021 and 2026.

# Enrollment in Everett Public Schools

The District currently enrolls about 18% of the County K-12 population and we expect this number to remain relatively steady through 2021 with some decline after that point. This is consistent with some of our housing trend data which shows fewer homes being developed between 2021 and 2026.

Our recommended forecast predicts that elementary enrollment will grow next year due to a slightly larger kindergarten population that is eligible for school in Everett and the County. Between 2018 and 2020 we may see some declines or flattening of the elementary growth trend as larger classes start to exit the schools at the fifth grade. But our long term elementary forecast shows more growth than last year over the course of the decade. This is due primarily to the latest birth numbers and an updated birth forecast, which is higher than our forecasts from the past two years. These higher numbers reflect the recent improvement in population gains in the County, especially for women who are in their prime child-bearing years (20-35 years old).

We expect middle school enrollment to trend up next year, and consistently over the next few years, as the larger elementary classes from last few years roll up into the middle school grades. We are also predicting gains at the high school level over time as these classes continue to rollup from middle school into high school.

# Enrollment in Everett Public Schools

There is, of course, inherent uncertainty in predicting the future. To account for this uncertainty we have created low and high alternatives to our recommended forecast that show what might happen if growth were to be about one percent lower or higher on an annual basis than what we have assumed in our main forecast. This difference is consistent with the generally accepted error rate for a one year forecast, and shows how these differences look when accumulated over time. It is recommended that the District examine the low and high alternatives to consider what steps might be taken if enrollment were to trend closer to the low or high range alternatives. It is also recommended that the long range forecasts be updated periodically to account for new demographic and enrollment information.

The next sections of this report provide charts and tables that highlight important enrollment and demographic information. Each section is preceded with a set of bullet points that emphasize the important information to keep in mind when viewing the charts. The final section of the report describes the methodology used to create the forecasts along with detailed numbers for the District and the schools.

# Highlights

Enrollment Trends

Birth Trends

Population Trends

Housing Trends



# Enrollment Trends

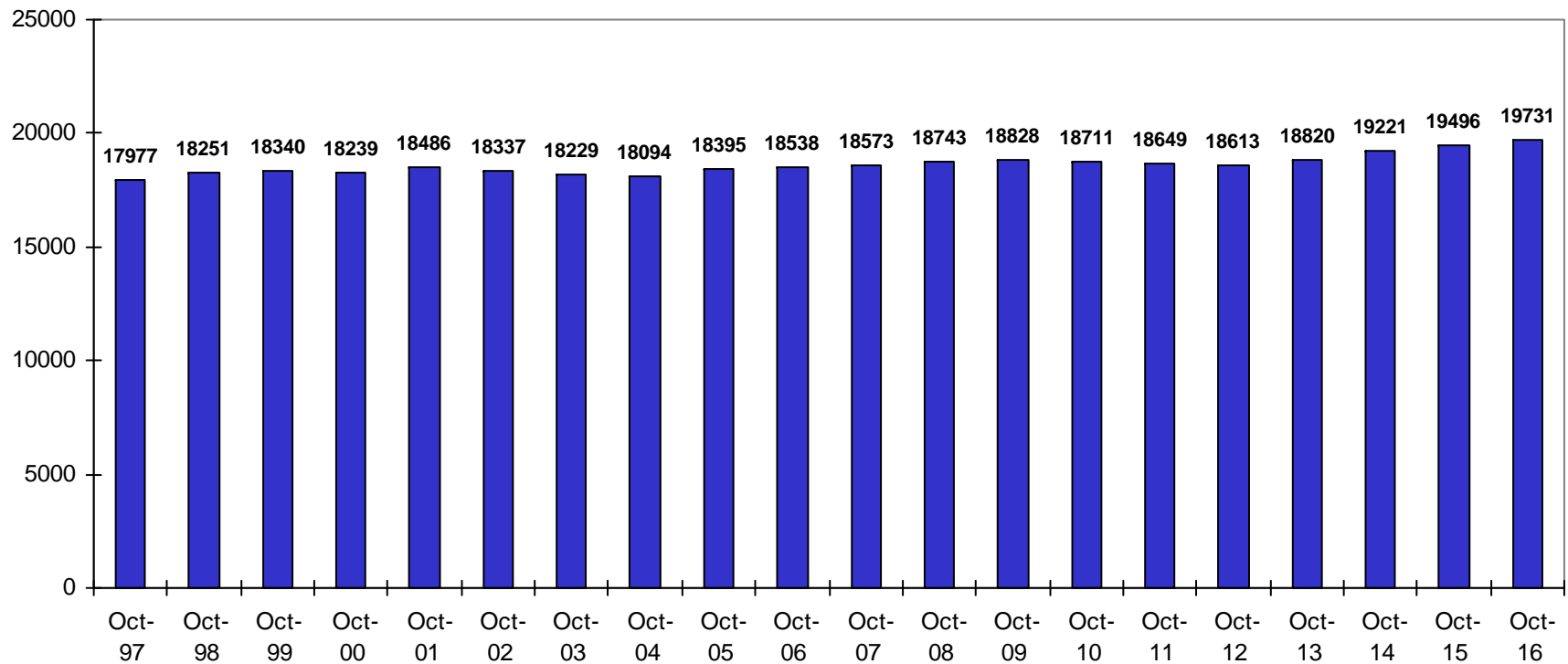
- Enrollment in the Everett Public Schools grew by 235 students between October 2015 and October 2016. This growth was 49 students lower than the medium range projection completed last year.
- The overall net gain in the Snohomish County K-12 population over the past year was much larger than the trends we saw in the previous two years. In addition, there were more net gains in the outlying regions of the County, and the majority of the Districts in the County saw their enrollment grow.
- King and Pierce County continue to see strong enrollment gains. We expect the gains in all three counties to continue through at least 2025 as larger birth cohorts enter the schools and population gains continue. Beyond that point we may see some tempering of the enrollment gains as larger graduating classes begin to offset the effect of larger kindergarten classes.

# District Enrollment Trend

October Headcount

State P223 Reports

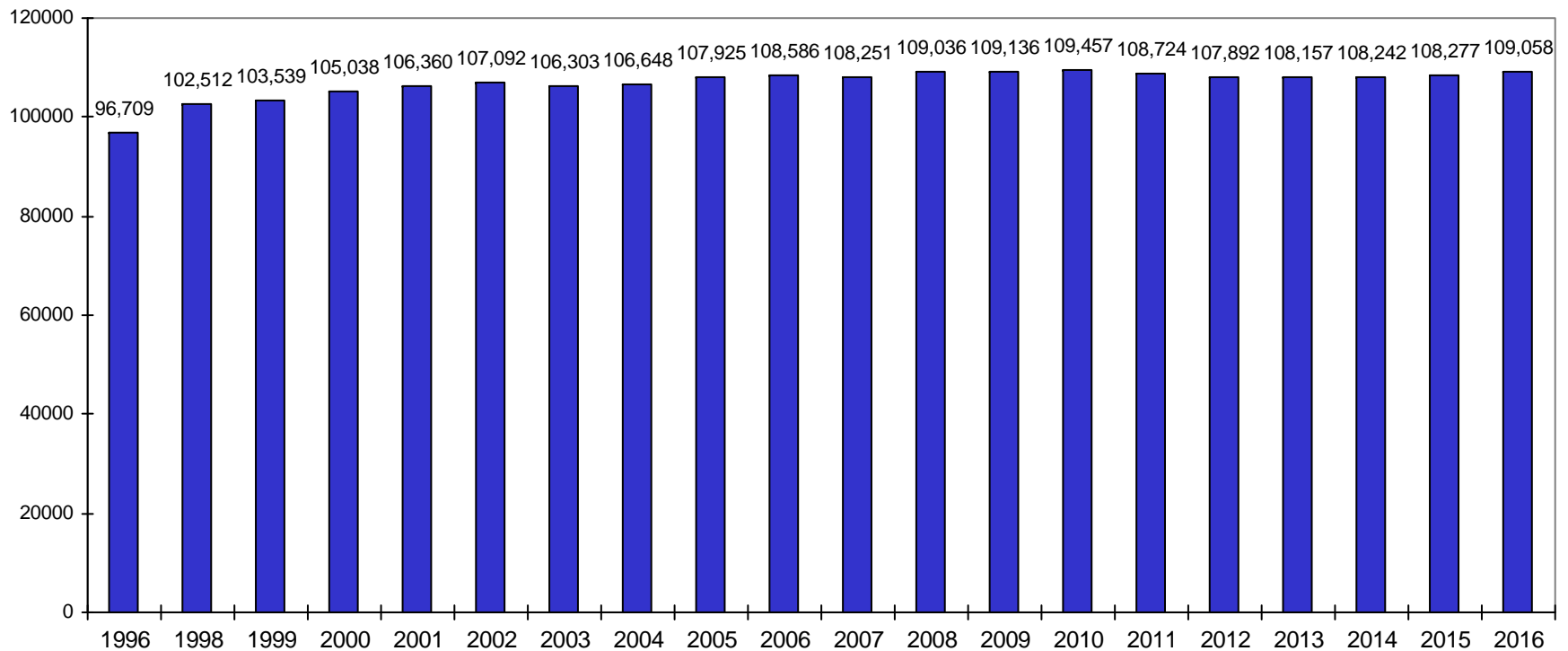
Note: Does NOT include students enrolled ONLY in Running Start

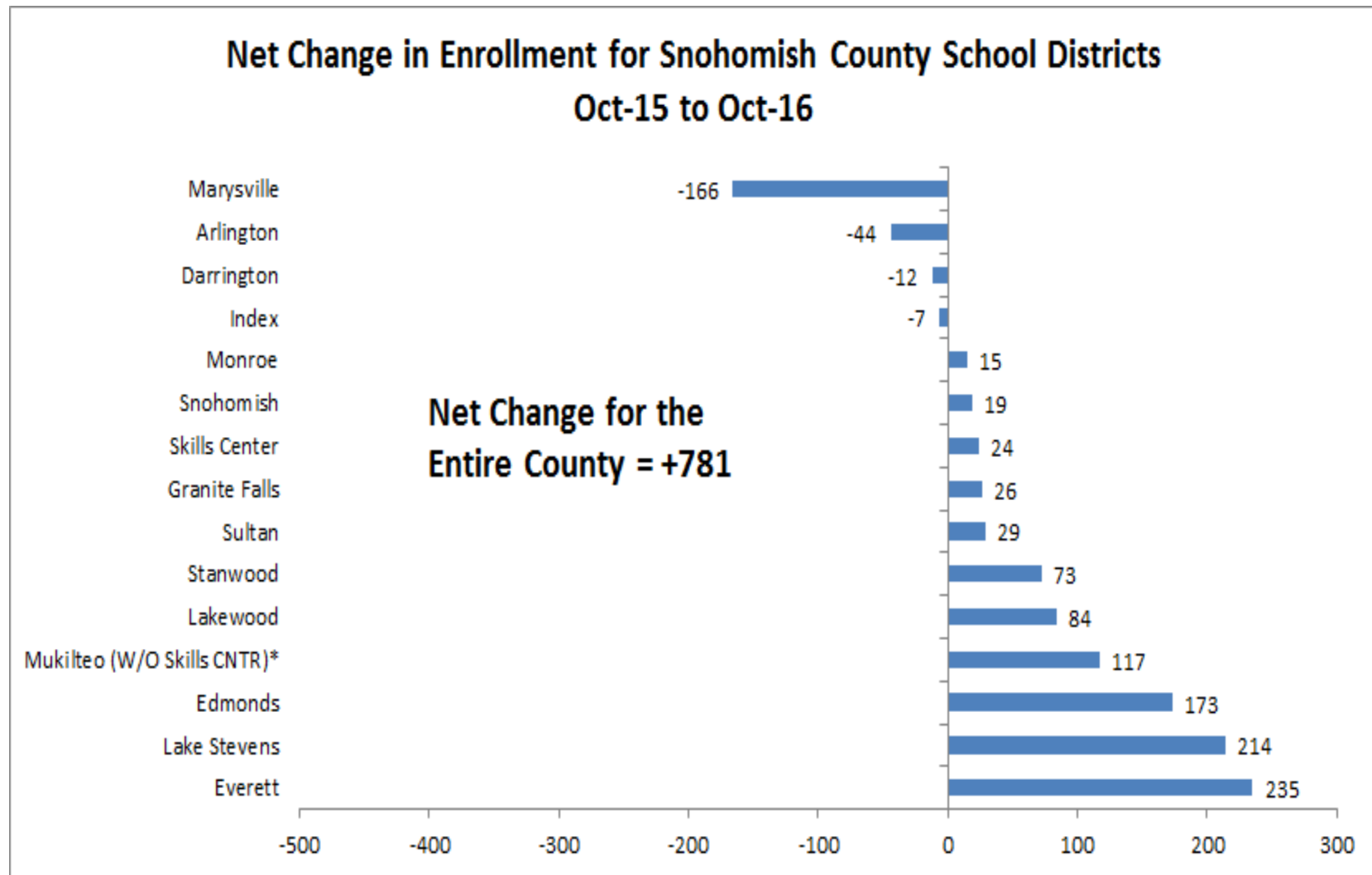


# Snohomish County Public Schools Enrollment Trend

October P223

Historical Numbers May Have Changed Since They were Originally Reported



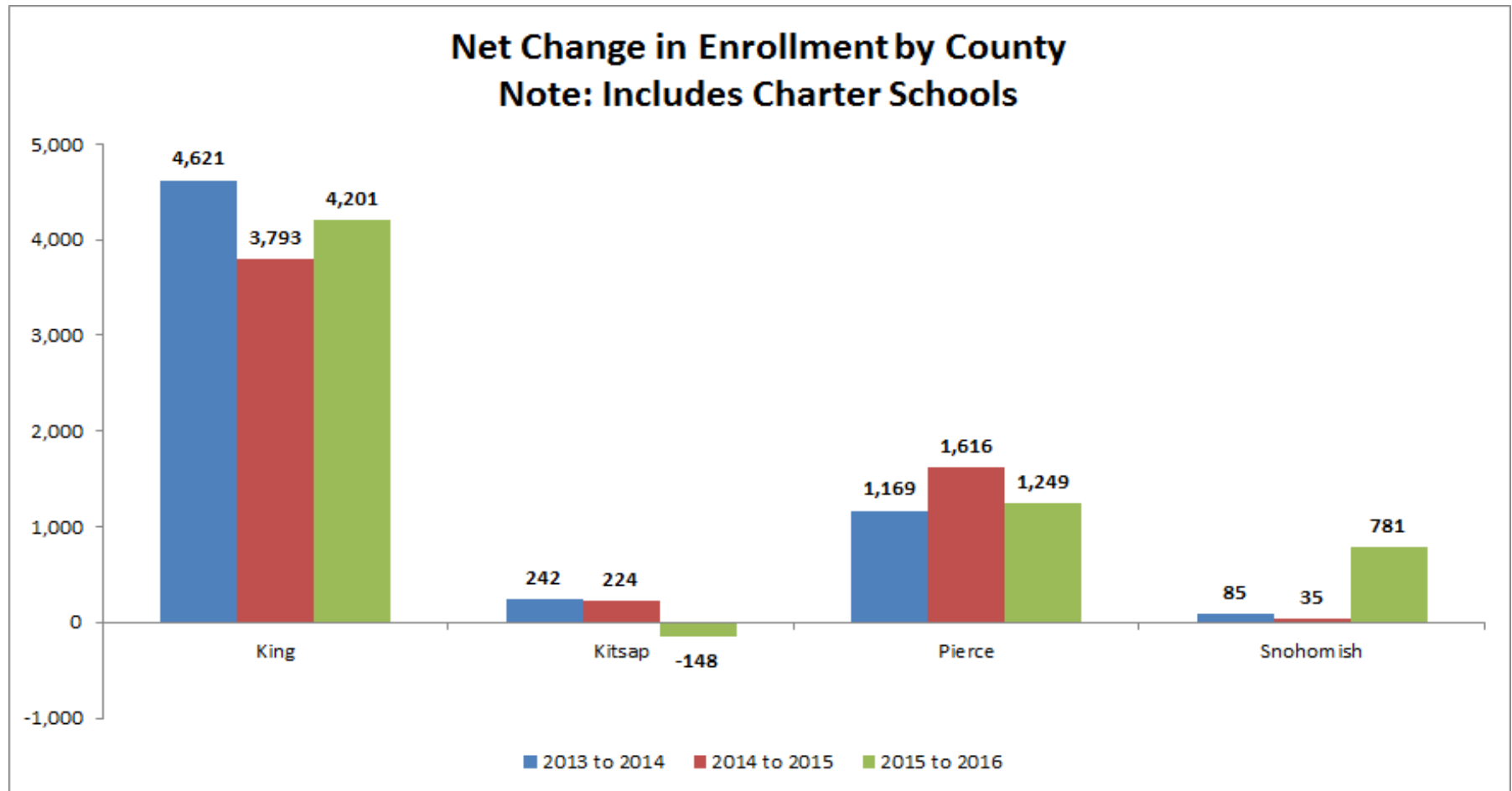


Numbers May Have Changed Since Originally Reported: P223

# Net Change in Enrollment by County

## Three Year Trend

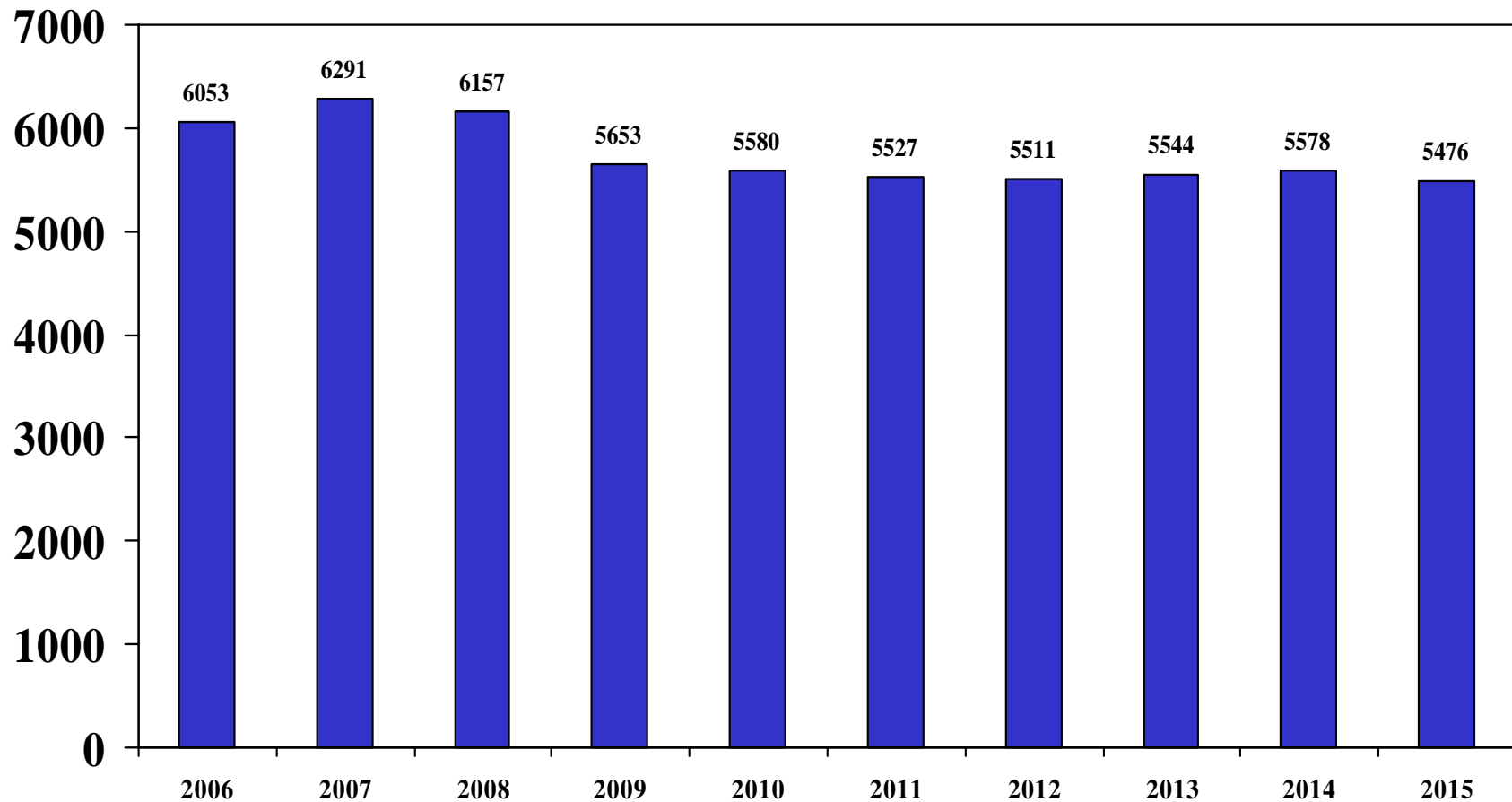
### October to October



# Private School Enrollment Snohomish County

(Numbers Include Pre-School)

**Numbers are updated periodically and may change.**

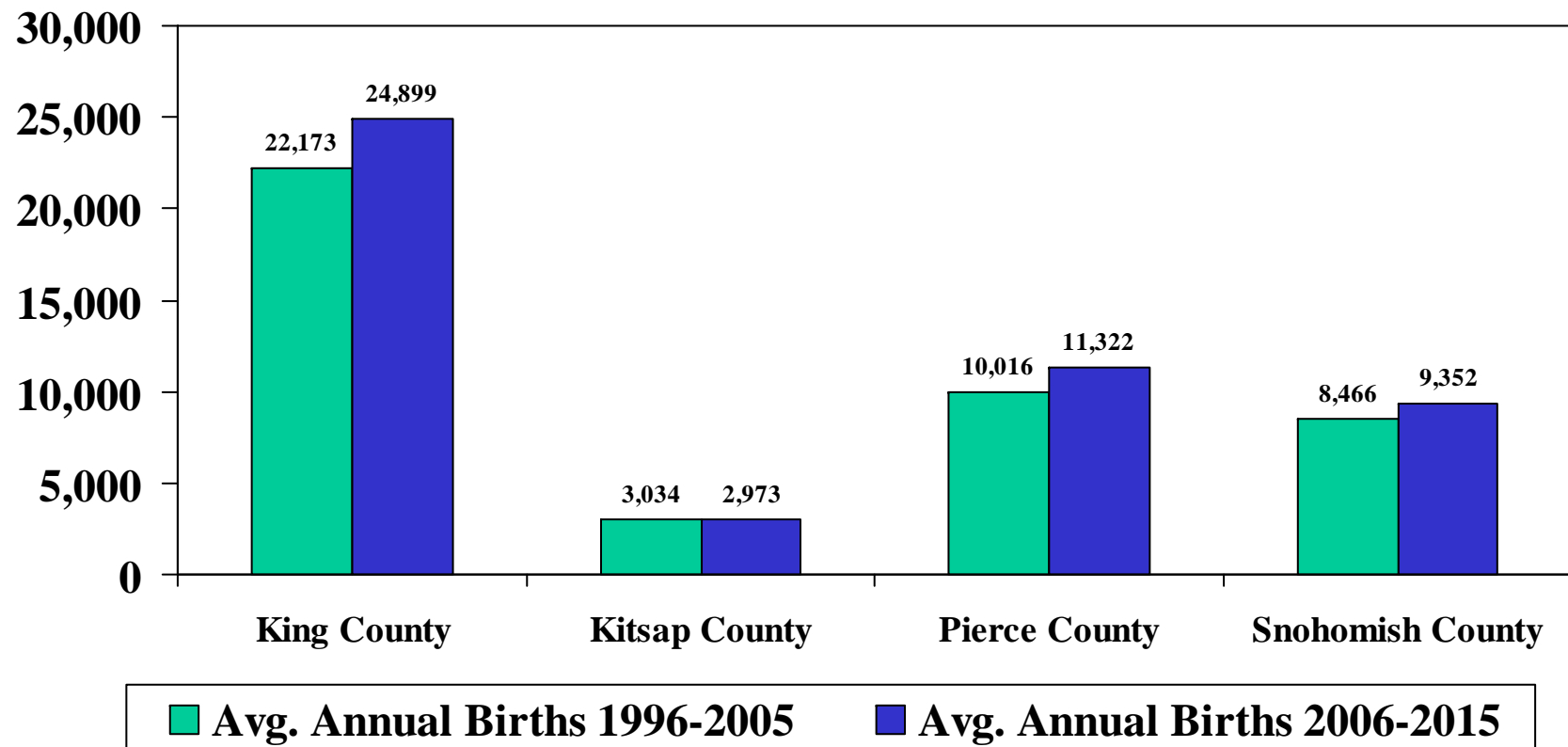


# Birth Trends

- The number of births in Snohomish County in 2015 was 9,766. This marks the fourth straight year that births have trended higher than the previous year.
- Our latest birth forecasts show more births over time due to recent gains in the number of women in the Snohomish County population who are in their prime child-bearing years (20 to 35 years old)
- As these larger birth cohorts continue to enter the schools between 2017 and 2025, enrollment in Snohomish County and the Puget Sound generally, is expected to increase.
- The District's share of the County birth cohort increased over the past year to the highest level we have seen since the period between 2007 and 2009. We expect that the addition of full day kindergarten may be responsible for this trend and we are predicting that the percentage will remain at the current level or slightly higher over time.

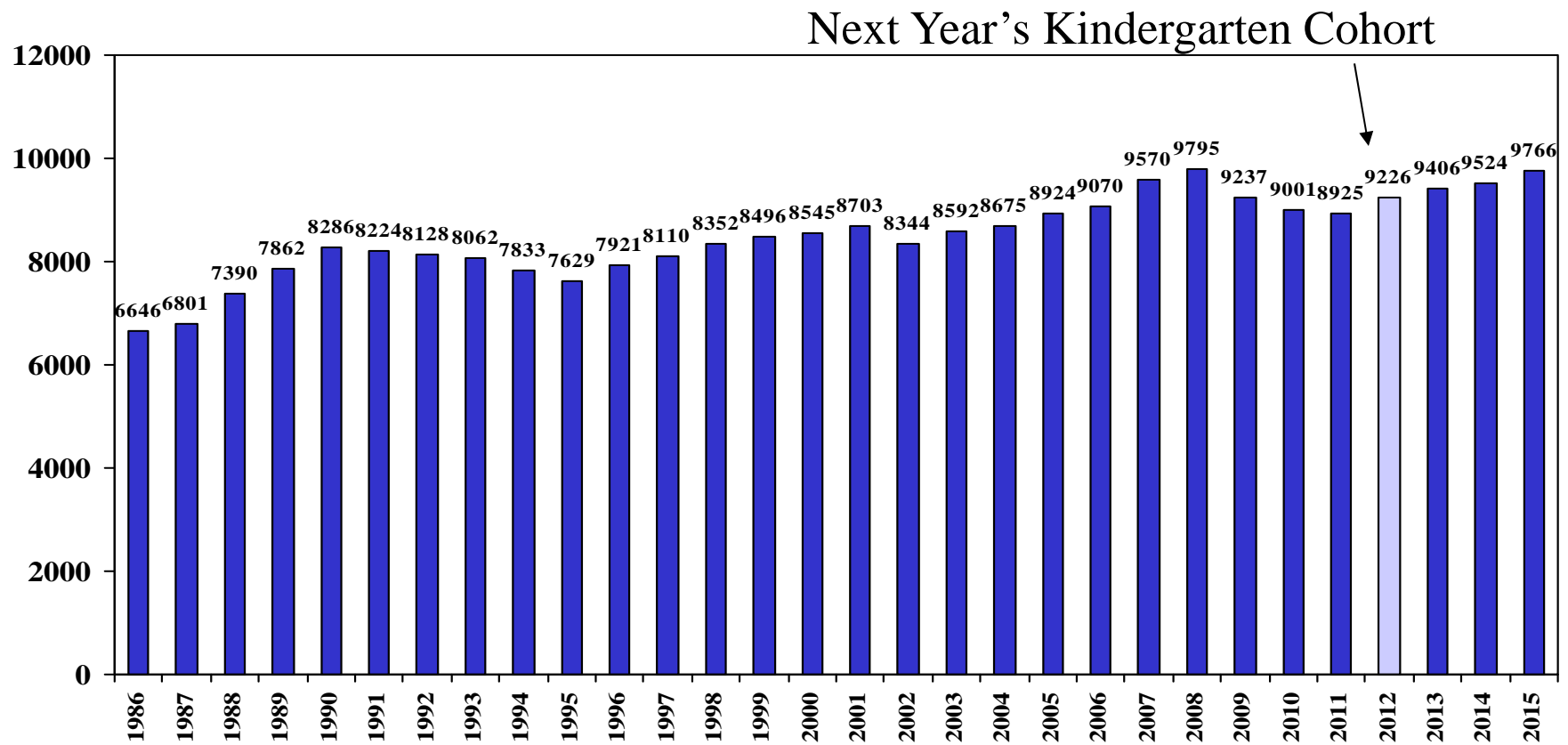
# Average Annual Births by County

Source: State of Washington Department of Health Birth Files





# Snohomish County Births

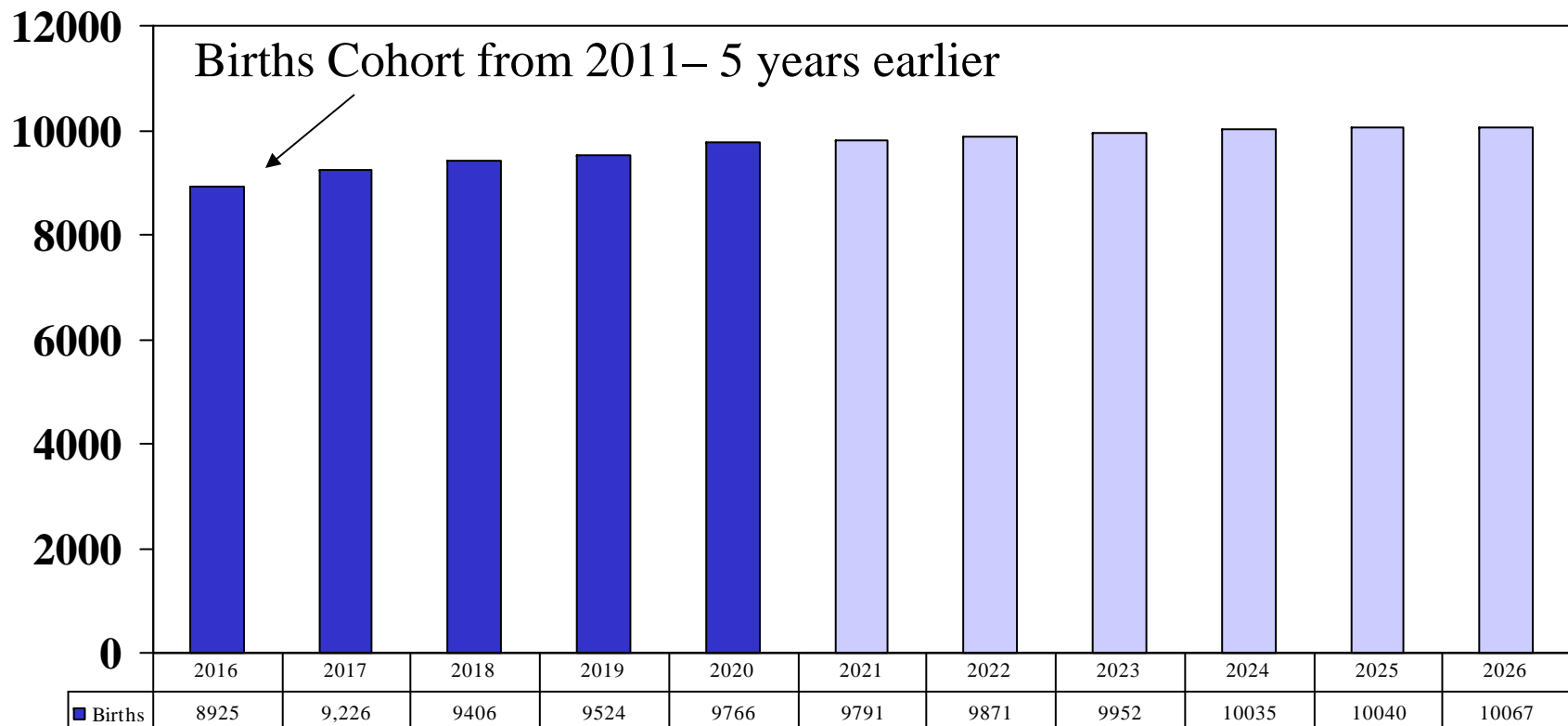


# Actual and Projected Births Grouped by Enrollment Year

Cohorts for 2016 to 2019 are Based on Actual Births

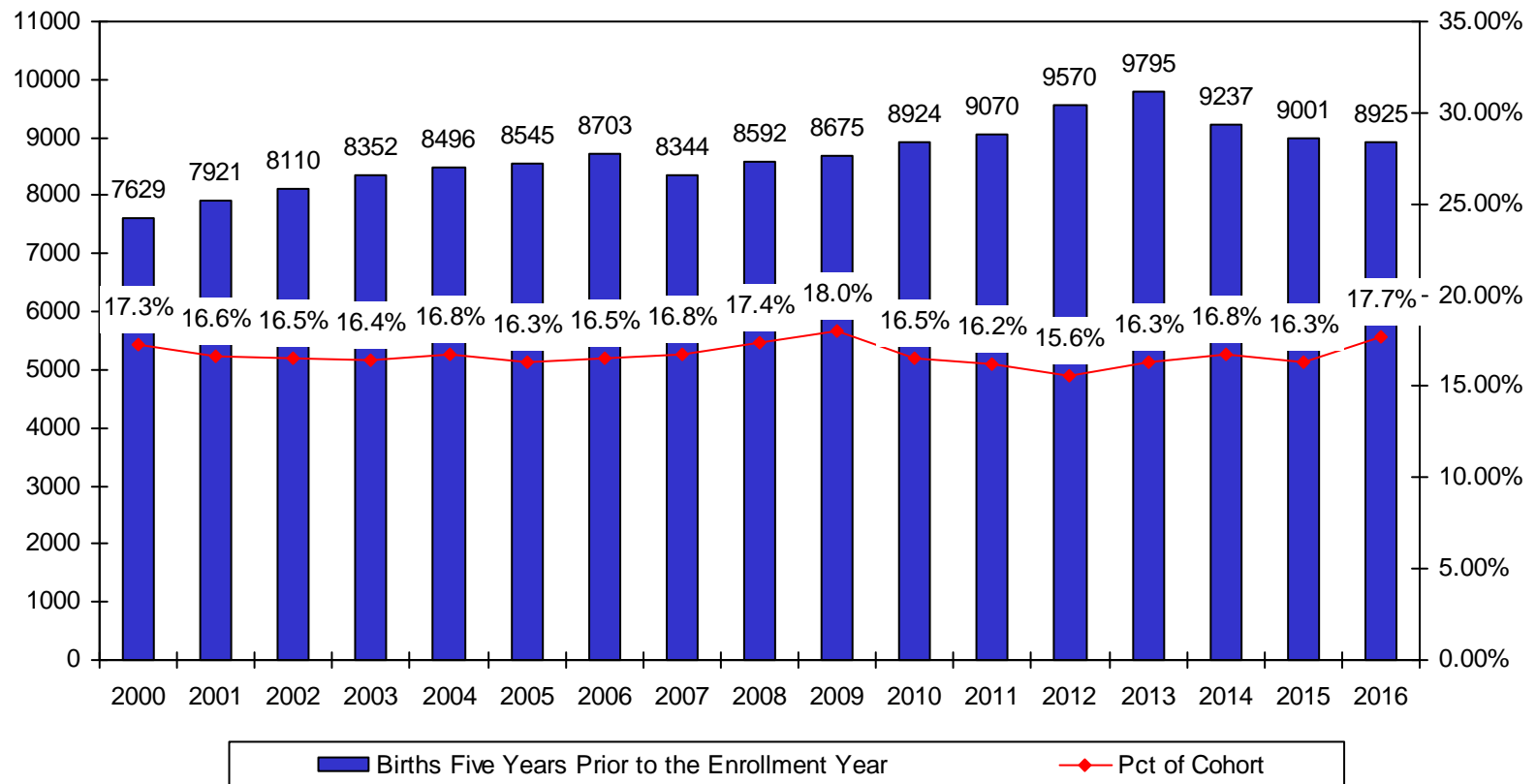
Cohorts for 2020 to 2025 are Based on Projected Births

The forecast is based on the average of fertility rates for the past two years and the forecast of women in their child-bearing years using the State medium range forecast for Snohomish County. The forecast assumes that fertility rates will be similar to recent trends.



# Everett Public Schools

## Kindergarten Enrollment as a Percent of Snohomish County Births

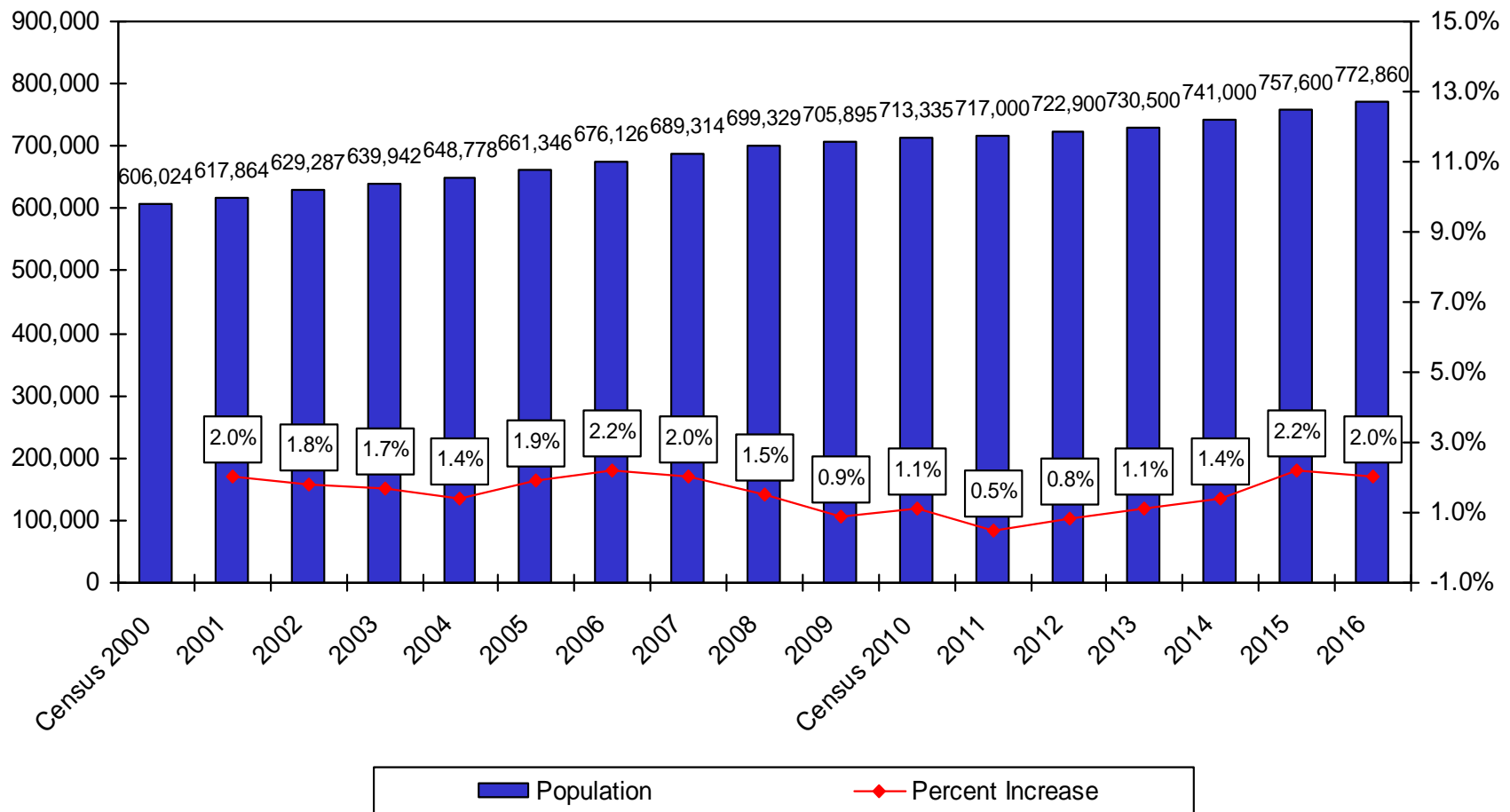


# Population Trends

- Over the past two years the population of Snohomish County has grown at a rate of two percent or more annually. This is well above the predicted rate of 1.3% annual growth from the State forecast of the County population that was completed in 2012 (Office of Financial Management for the State of Washington).
- The District population is continuing to grow at about the same rate as the overall County population. This is a change from the trends we saw between 2000 and 2010 when the District was growing at a slower rate than the overall County.
- Our current forecast of the District's resident population assumes that it will continue to grow at about the same rate as the county through 2021 with some slowing after that time period.
- The current forecast of the District's K-12 population assumes that the District's share of the County K-12 population will remain stable in the near term and then drop slightly over the course of the decade.

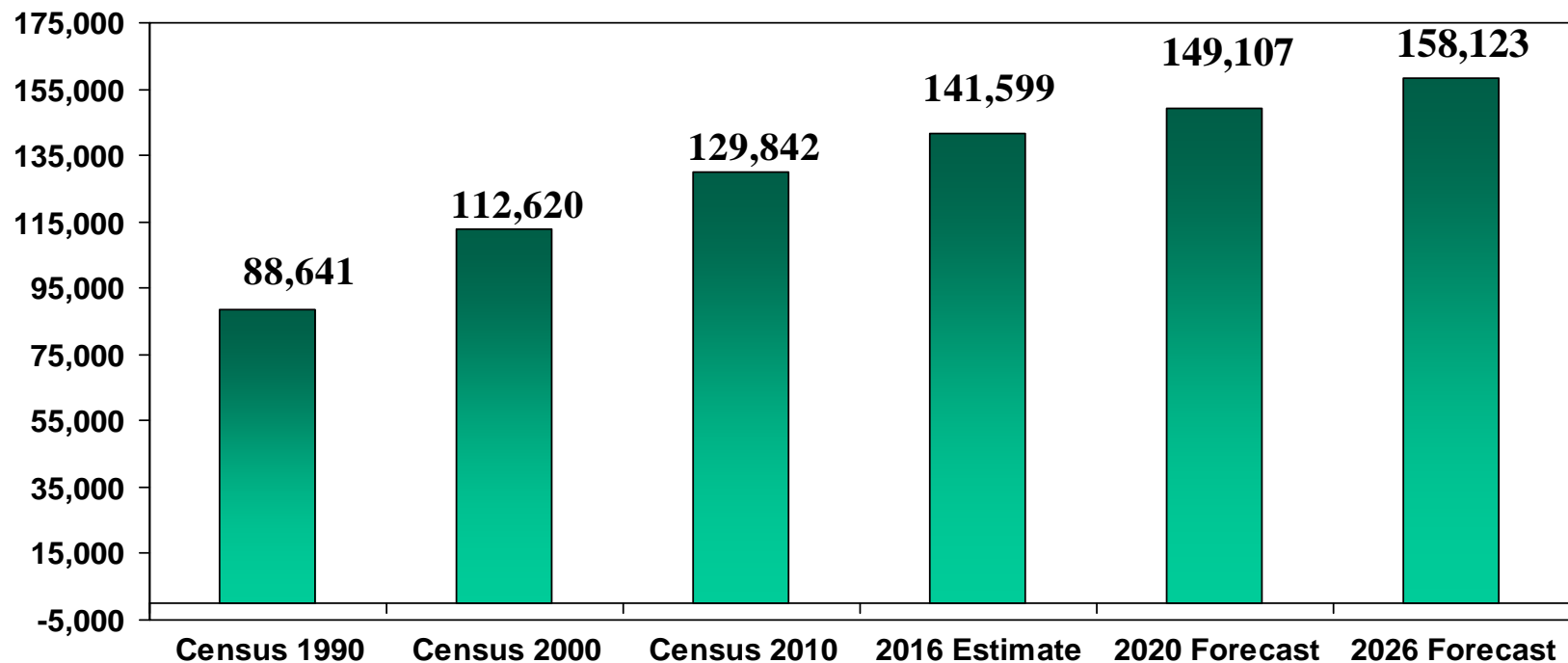
# Snohomish County Population Estimates

Source: Census and OFM State of Washington



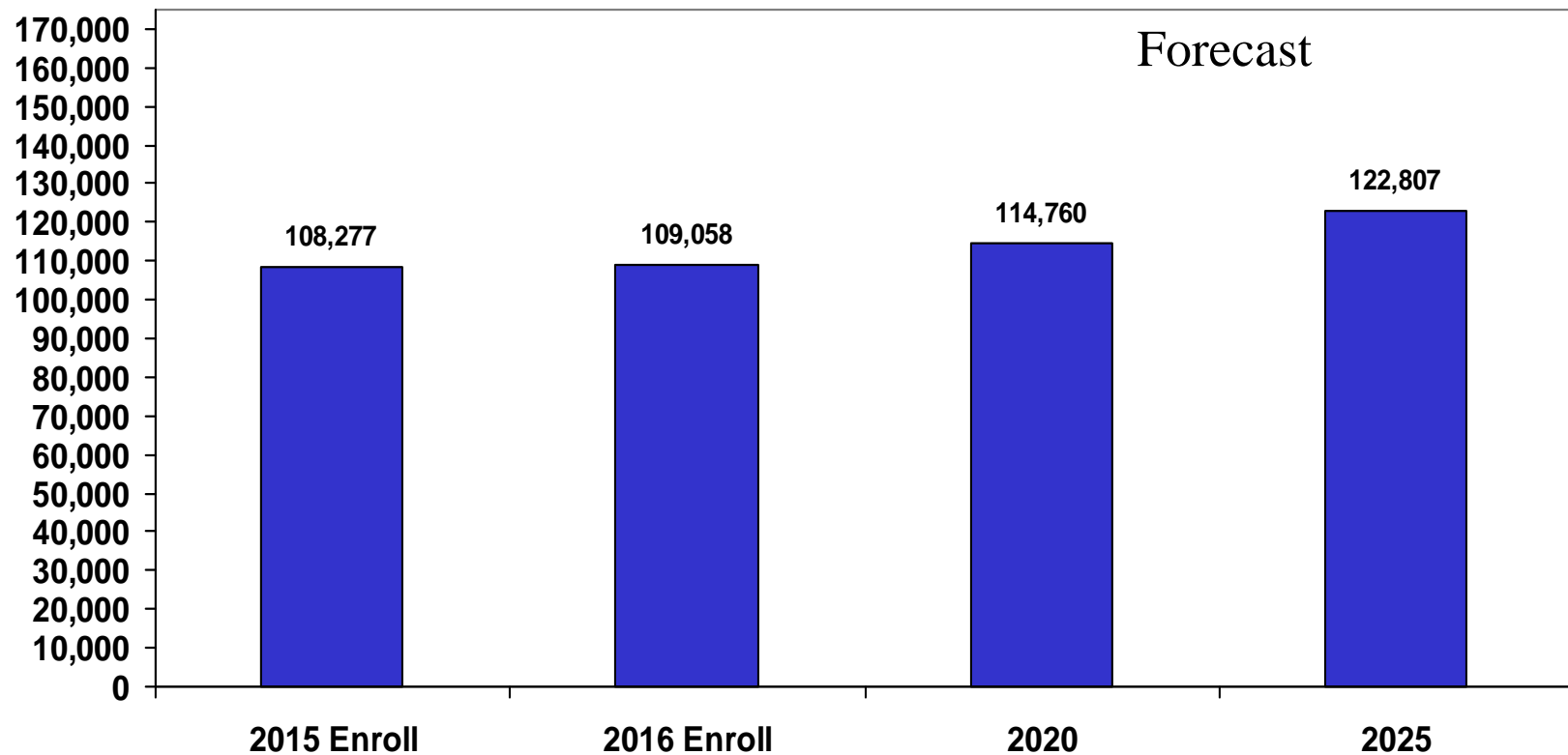
# Population and Population Forecast for the Everett Public Schools

The forecast is based on the medium range population forecast for the County from the Office of Financial Management. The forecast assumes that the District population will grow at about the same rate as the County through 2020, with some slowing of the growth trend between 2020 and 2026.



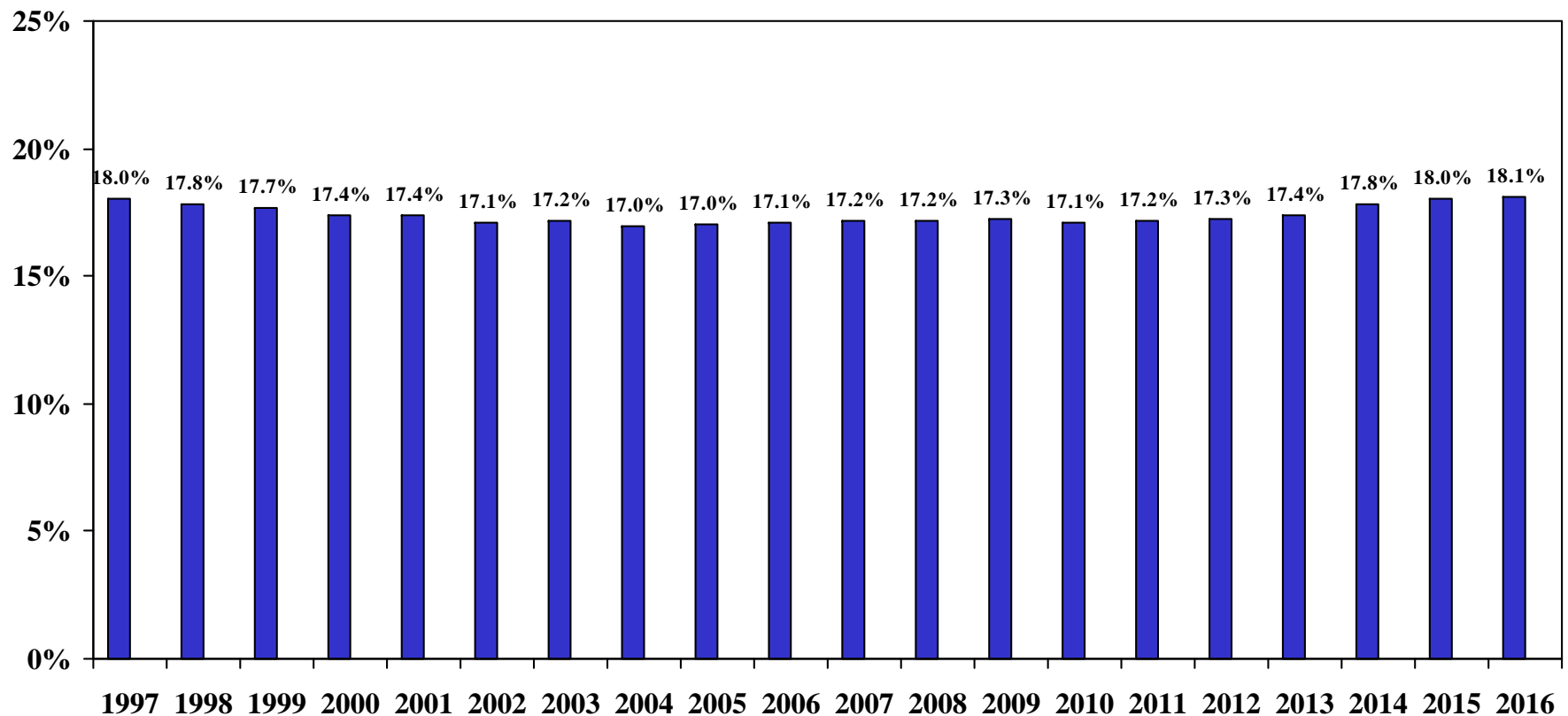
# Projected K-12 Snohomish County Public School Enrollment

Based on Births, Birth Forecasts, and Projected Growth in the School Age Population  
Using the Medium Range County Population Forecast from the State of Washington



# Everett Public Schools:

## Share of the County K-12 Public School Enrollment



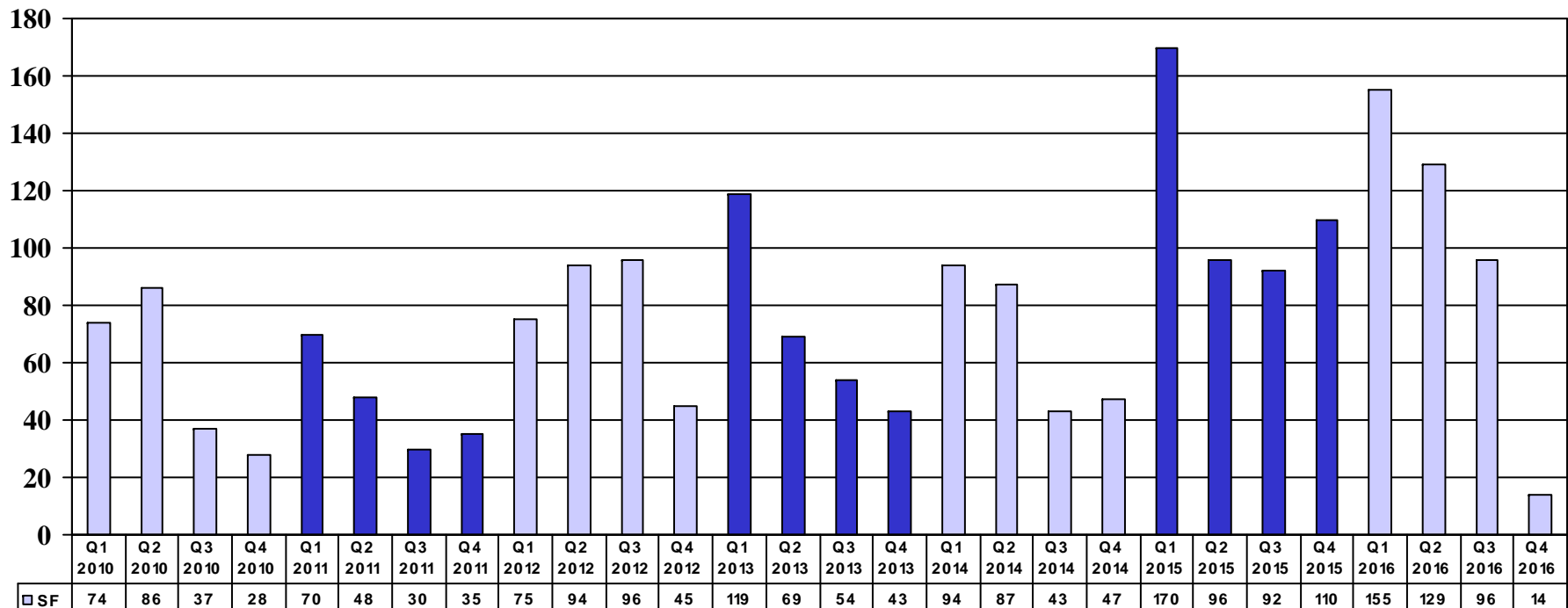


# Housing Trends

- The number of new single family home sales in the District in 2016 will likely be very close to the number we saw in 2015. The number of new home sales in 2015 and 2016 are the highest numbers we have seen over the past decade.
- Data from New Home Trends indicates that approximately 1,800 single family homes and approximately 1,600 multi-family units have been permitted and built since the 2010 Census.
- There are approximately 640 single family homes that are either currently for sale or planned for future construction and sale within the District boundary area. There are also approximately 2,800 multi-family units in the pipeline for development. We expect just under 3,000 of these units to be added to the District's housing stock over the next five years.
- There are approximately 2,200 units that are listed for projects that are expired, inactive, or withdrawn. It is likely that these units will be resurrected (or developed with new plans) at some point in the future.

# Quarterly Sales of New Construction Single Family Homes in the Everett Public Schools 2010-2016

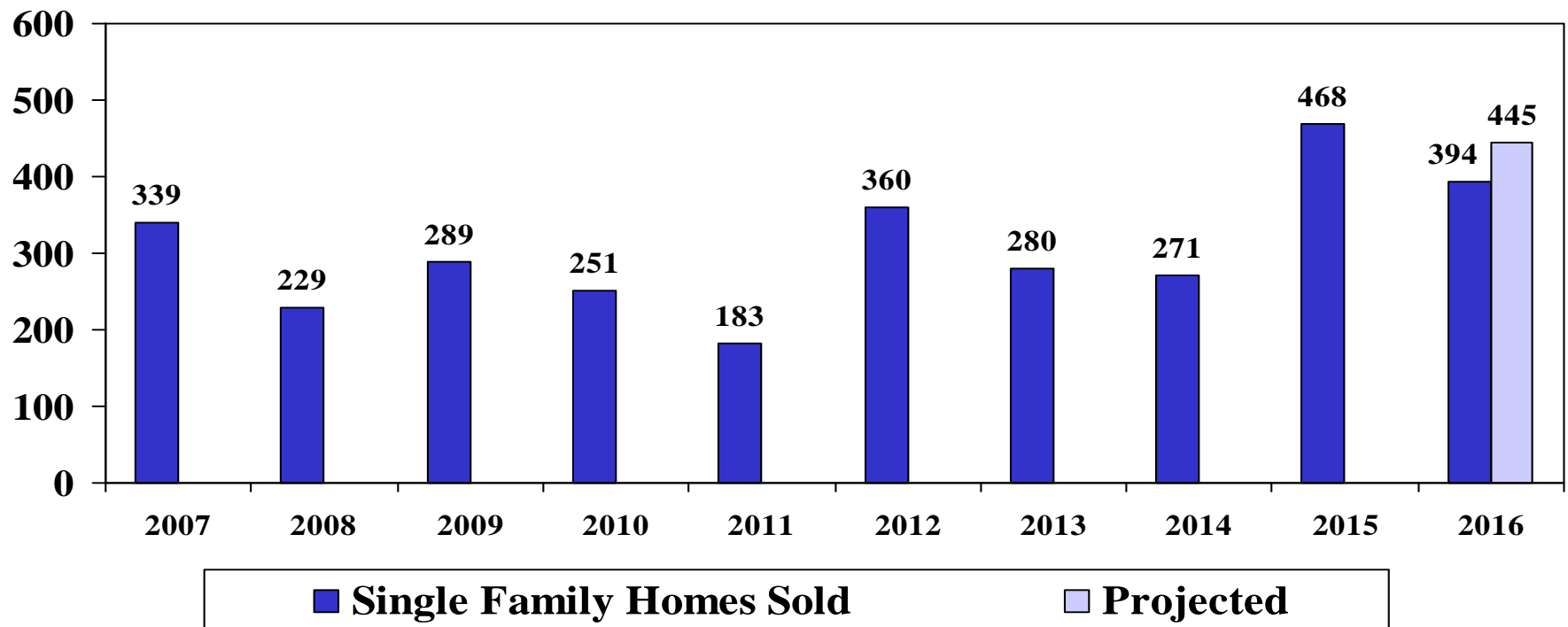
Source: New Home Trends Database



\*The 2016 estimate for quarter four is as of November 2016.

# Sales of NEW CONSTRUCTION Single Family Homes by Year in the Everett Public Schools 2007-2016\*

Source: New Home Trends Database



\*The 2016 estimate is as of November 2016. The forecast is based on the trends of the past few years and the most recent quarterly sales figures.

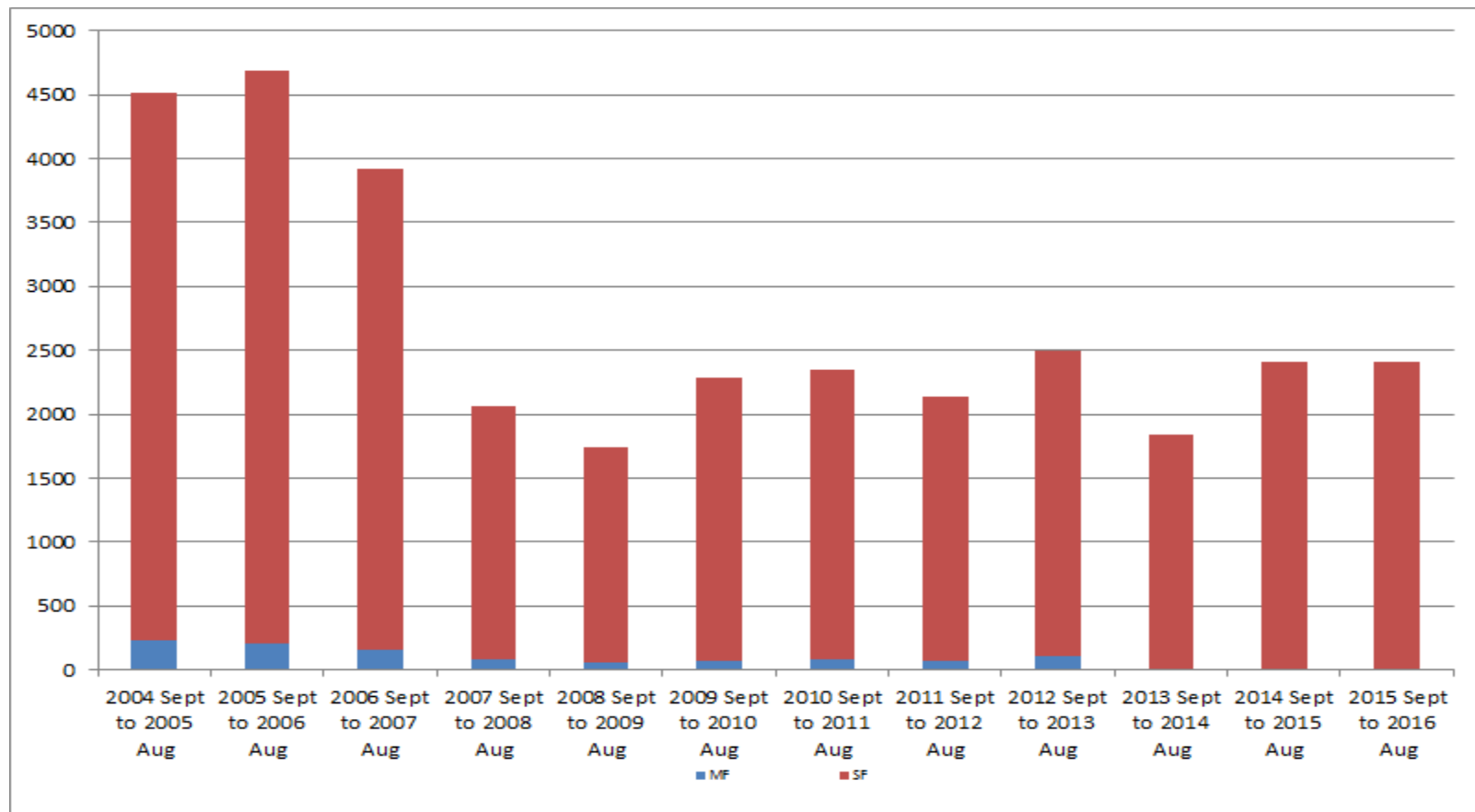
# Single Family and Multi-Family Home Sales: New and Existing Homes in the Everett Public Schools

*Source: King County and Snohomish County Assessor's Database*

*Data Compiled by Tetra-Tech*

*The Numbers For a Given Year Are Subject to Change Based on Updates by County Personnel*

*The Trend is More Important than the Specific Numbers for Each Year*



# Projection of K-12 Enrollment in 2021 and 2026 Based on Census and Housing Data

Everett Forecast of Total Enrollment Based on Census Counts and New Home Trend Estimates

<u>Census Count Totals</u>					<u>Estimates</u>		<u>Project 2021</u>		<u>Project 2026</u>	
	<u>1990</u>	<u>2000</u>	<u>2010</u>		<u>2016</u>		<u>#1</u>		<u>#2</u>	
Population	88,569	112,635	129,842		141,599		148,390		158,123	
Change		24,066	17,207		11,757		6,791		9,733	
% Change		27.2%	15.3%		9.1%		4.8%		6.6%	
Annual %		2.7%	1.5%		2.3%		1.2%		1.3%	
Houses	35,813	44,815	53,395		56,843		59,700		62,495	
Houses Added		9,002	8,580		3,448		3,036		2,795	
Avg. Household Size	2.47	2.51	2.43		2.49		2.49		2.53	
New Home Trends Data					<u>Recorded</u>	<u>Still For</u>	<u>Still for Sale</u>		<u>Total with</u>	
					<u>2011-2016</u>	<u>Sale</u>				
							<u>Pipeline</u>		<u>Inactive/Expired</u>	<u>Inactive/Expired</u>
					MF	1,600	82	2,713	1,153	3,948
					SF	1,848	275	366	1,063	1,704
						3,448	357	3,079	2,216	5,652
							<u>Plus Pipeline</u>			
							2,795			
							641			
							3,436			
					<u>Students Added*</u>		<u>Students Added*</u>		<u>Students Added*</u>	
					MF	643			908	
					SF	288			762	
					Total	931			1,670	
K-12	18,239	18,711	19,731				20,662		21,401	
K-12 Per House	0.41	0.35	0.35				0.35		0.34	

\*45 Students per 100 Single Family Homes

\* 23 Students per 100 Multi-Family Units

# Enrollment Projections

Accuracy

Methodology

District Forecast by Grade

School Forecasts

# Accuracy of Forecasts

- Our one year forecasts of the District's enrollment have generally been within half-a-percent of the actual enrollment. The one recent exception to this was 2014 when enrollment was 1.5% higher than projected (page 32).
- The long range forecasts that have been completed since 2009 have all projected an increase in Everett's enrollment over time (see page 33).
- The long range forecasts from 2012 and 2013, when the housing market was still recovering, predicted a slower growth trend over time than we have seen in the past few years.
- Since 2014 our forecasts have predicted a better growth trend over time consistent with the early forecasts that were completed in 2009 and 2010.
- A forecast that extends six years or longer can sometimes be off by as much as 3-4%. If it is a good forecast, however, it should accurately predict the enrollment trend (going up, going down, or staying flat).

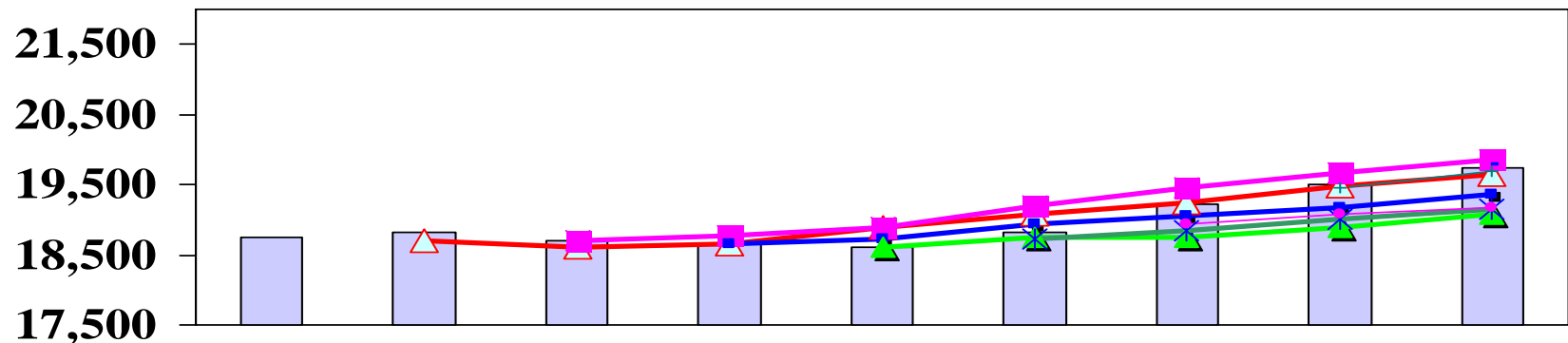
## Accuracy of One Year Forecast Estimates

	<u>Oct-09</u>	<u>Oct-10</u>	<u>Oct-11</u>	<u>Oct-12</u>	<u>Oct-13</u>	<u>Oct-14</u>	<u>Oct-15</u>	<u>Oct-16</u>
Forecast	18,709	18,708	18,651	18,608	18,733	18,942	19,451	19,780
Actual	18,828	18,711	18,649	18,613	18,820	19,221	19,496	19,731
Diff.	119	3	-2	5	87	279	45	-49
% Error	0.6%	0.0%	0.0%	0.0%	0.5%	1.5%	0.2%	-0.2%



# Enrollment Compared to Long Range Forecasts Completed Between 2009 and 2016

Please Note: All forecasts projects a ten year horizon but for comparison purposes the chart displays each forecast out to 2016 only, the latest year for which actual enrollment is available. For example, the forecast from last year shows the 2016 forecasted enrollment only and not the subsequent years.



	Oct08	Oct09	Oct10	Oct11	Oct12	Oct13	Oct14	Oct15	Oct16
Actual Enrollment	18743	18828	18711	18649	18613	18820	19221	19496	19731
Forecast 2009-2018		18709	18611	18646	18882	19089	19245	19469	19640
Forecast 2010-2019			18708	18764	18883	19194	19446	19675	19851
Forecast 2011-2020				18651	18731	18937	19052	19173	19356
Forecast 2012-2021					18608	18745	18754	18892	19087
Forecast 2013-2022						18733	18843	19012	19143
Forecast 2014-2023							18942	19070	19164
Forecast 2015-2024								19451	19682
Forecast 2016-2025									19780

# Methodology for the Forecast

The forecasts in this report are based primarily on birth counts, birth forecasts, grade level enrollment trends, and projected changes in the K-12 population over time due to population growth and new home construction and sales. The following provides a brief description of the methodology used to create the forecast.

## **Births and Birth Forecasts**

Both county and city births were used to project kindergarten. The number of county births is known through 2015 which means that we can predict kindergarten enrollment based on actual births out to 2020. Beyond that point, births were projected based on the most recent fertility rates for the county and the forecast of the number of women likely to reach their childbearing years over time using the medium range county forecast from the State of Washington. Births in the city of Everett are also known through 2015. Beyond 2015, births in the city were predicted based on the correlation between city and county births. City births have averaged around 23% of the overall county births in the last three years. This is down a bit from the average we saw between 2007 and 2012. Looking ahead we have assumed that births in the city will continue to make up about 23% of the county total. This percentage was applied to the forecast of county births to predict how many births will occur in the city of Everett in the coming years.

# Methodology for the Forecast

## **Projecting Kindergarten Enrollment**

Kindergarten enrollment was projected using birth-to-k ratios. The birth-to-k ratio compares the kindergarten enrollment in a given year to births five years prior to that year. Ratios for both the City and the County are much higher this year than in past years, most likely due to the implementation of full day kindergarten. We are assuming they will remain close to this year's level over the course of the forecast with some fluctuations from year to year. We also expect that the gains at kindergarten in a given year will likely be offset by a lower growth trend between kindergarten and first grade for subsequent years as more students enter at the kindergarten level and fewer enter at the first grade.

The forecast model applies the appropriate birth-to-k rate to actual and projected city and county births to create a prediction of future kindergarten enrollment. The average of these two estimates was then used as the forecast for kindergarten enrollment for each year. This method allows us to consider both city and county birth forecasts in our projection model, thus allowing us to consider the impact of both on enrollment.

# Methodology for the Forecast

## **Projecting Grades 1-12**

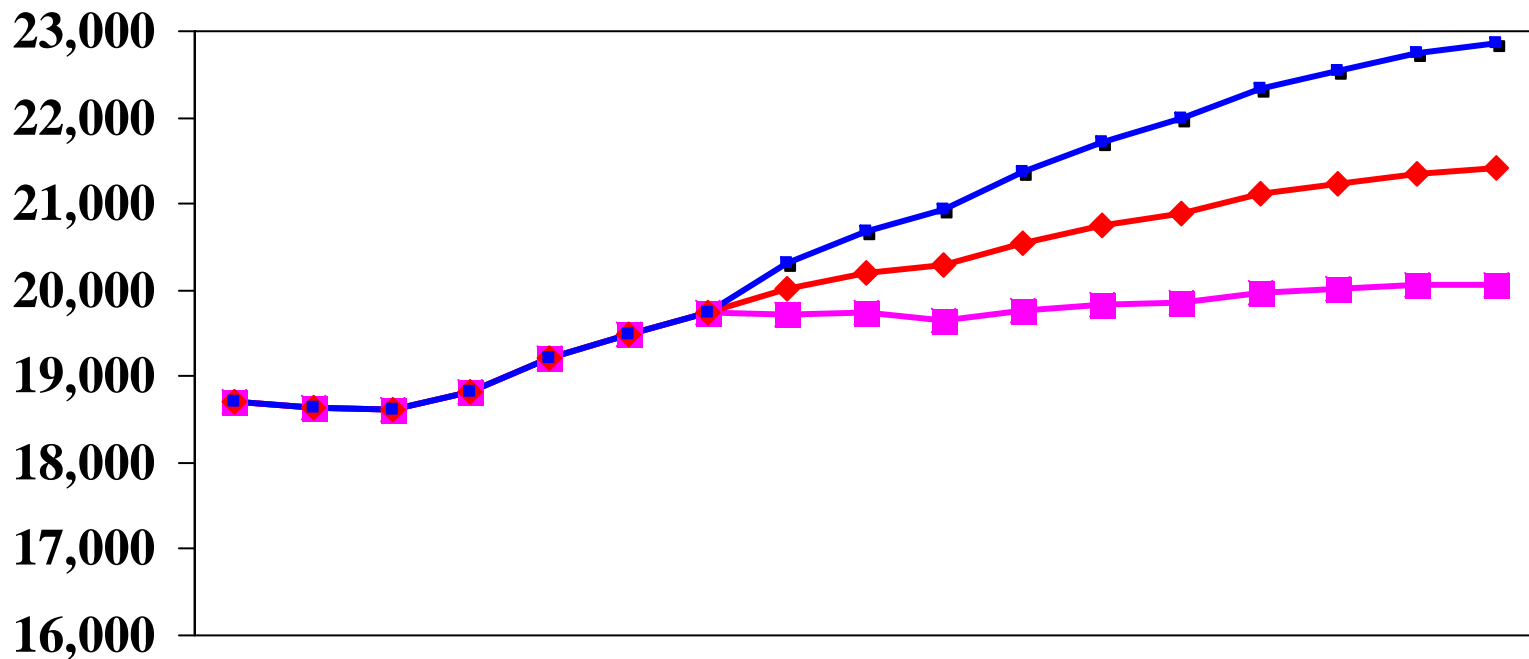
The forecast at grades 1-12 was based on grade level cohort rates which predict the net gain and/or loss in enrollment as students progress from one grade to the next. A three year weighted average was used to predict next year's enrollment. The three year average reflects the most recent demographic trends. The forecasts for subsequent years were based on an average of the past six years which more adequately reflects both low and high forecast years. We assume there will be some variation in growth over the course of the forecast (both higher and lower years) and the six year average more adequately reflects these variations.

The forecasts for each year were then adjusted to reflect projected changes in housing and K-12 population growth over time using New Home Trends data and projections of the County K-12 and the general population of Everett.

Similar to last year, this year's model shows the District growing at about the same rate as the County K-12 population through 2021. After that point, the growth rate overall is predicted to be slower. This is consistent with our housing data which shows fewer homes being developed between 2021 and 2026 than in the first five years of the forecast.

# Low, Medium, and High Range Forecasts 2017-2026

Based on kindergarten trends, grade-to-grade growth, and an adjustment for projected future changes in population growth and housing.



	Oct10	Oct11	Oct12	Oct13	Oct14	Oct15	Oct16	Oct17	Oct18	Oct19	Oct20	Oct21	Oct22	Oct23	Oct24	Oct25	Oct26
Low Growth	18711	18649	18613	18820	19221	19496	19731	19712	19731	19646	19765	19841	19859	19974	20009	20061	20059
Medium (Recommended)	18711	18649	18613	18820	19221	19496	19731	20012	20207	20282	20551	20759	20891	21111	21233	21357	21406
High Growth	18711	18649	18613	18820	19221	19496	19731	20311	20691	20934	21365	21723	21984	22326	22546	22751	22858

## Everett Enrollment History (October Headcount)

<u>Birth Data</u>										
Birth Year	<u>2002</u>	<u>2003</u>	<u>2004</u>	<u>2005</u>	<u>2006</u>	<u>2007</u>	<u>2008</u>	<u>2009</u>	<u>2010</u>	<u>2011</u>
City of Everett Births	2102	2007	2197	2276	2338	2450	2566	2260	2227	2166
% of Cohort	66.7%	74.4%	71.2%	64.5%	62.7%	60.9%	62.1%	68.6%	66.0%	72.8%
City of Mill Creek Births					197	203	222	204	219	190
County Births	8344	8592	8675	8924	9070	9570	9795	9237	9001	8925
Pct of Cohort	16.8%	17.4%	18.0%	16.5%	16.2%	15.6%	16.3%	16.8%	16.3%	17.7%

	<u>Oct-07</u>	<u>Oct-08</u>	<u>Oct-09</u>	<u>Oct-10</u>	<u>Oct-11</u>	<u>Oct-12</u>	<u>Oct-13</u>	<u>Oct-14</u>	<u>Oct-15</u>	<u>Oct-16</u>
<b>K</b>	1403	1494	1565	1468	1467	1493	1594	1550	1470	1577
<b>1</b>	1467	1452	1549	1595	1496	1549	1573	1681	1626	1524
<b>2</b>	1491	1490	1425	1502	1542	1473	1519	1612	1697	1669
<b>3</b>	1453	1453	1500	1403	1477	1552	1463	1533	1642	1701
<b>4</b>	1418	1462	1445	1427	1392	1437	1528	1501	1588	1618
<b>5</b>	1395	1426	1481	1425	1424	1341	1421	1549	1515	1591
<b>6</b>	1425	1383	1425	1499	1410	1429	1343	1402	1569	1486
<b>7</b>	1370	1424	1380	1407	1471	1406	1455	1369	1381	1566
<b>8</b>	1443	1370	1426	1379	1403	1437	1407	1451	1373	1424
<b>9</b>	1822	1492	1389	1432	1396	1442	1442	1443	1482	1375
<b>10</b>	1464	1476	1438	1365	1401	1365	1425	1417	1425	1479
<b>11</b>	1373	1666	1384	1365	1313	1309	1285	1350	1322	1363
<b>12</b>	<u>1049</u>	<u>1155</u>	<u>1421</u>	<u>1444</u>	<u>1457</u>	<u>1380</u>	<u>1365</u>	<u>1363</u>	<u>1406</u>	<u>1358</u>
<b>Total</b>	<b>18573</b>	<b>18743</b>	<b>18828</b>	<b>18711</b>	<b>18649</b>	<b>18613</b>	<b>18820</b>	<b>19221</b>	<b>19496</b>	<b>19731</b>

<b>Change</b>	35	170	85	-117	-62	-36	207	401	275	235
<b>Percent</b>	0.2%	0.9%	0.5%	-0.6%	-0.3%	-0.2%	1.1%	2.1%	1.4%	1.2%

### Enrollment by Level

<b>K-5</b>	8627	8777	8965	8820	8798	8845	9098	9426	9538	9680
<b>6-8</b>	4238	4177	4231	4285	4284	4272	4205	4222	4323	4476
<b>9-12</b>	5708	5789	5632	5606	5567	5496	5517	5573	5635	5575

## Projection (Medium Range Recommended)

<u>Projected Births</u>										
	<u>2012</u>	<u>2013</u>	<u>2014</u>	<u>2015</u>	<u>2016</u>	<u>2017</u>	<u>2018</u>	<u>2019</u>	<u>2020</u>	<u>2021</u>
	2202	2242	2127	2280	2269	2265	2305	2317	2316	2326
	74.5%	73.5%	76.8%	74.5%	74.9%	76.3%	75.9%	76.0%	76.1%	76.0%
	207	195	195	211						
	9226	9406	9524	9766	9791	9871	9952	10035	10040	10067
	17.8%	17.5%	17.2%	17.4%	17.4%	17.5%	17.6%	17.6%	17.5%	17.6%

	<u>Oct-17</u>	<u>Oct-18</u>	<u>Oct-19</u>	<u>Oct-20</u>	<u>Oct-21</u>	<u>Oct-22</u>	<u>Oct-23</u>	<u>Oct-24</u>	<u>Oct-25</u>	<u>Oct-26</u>
<b>K</b>	1641	1648	1634	1700	1700	1729	1748	1761	1761	1767
<b>1</b>	1600	1656	1646	1632	1697	1698	1727	1746	1759	1759
<b>2</b>	1530	1586	1643	1633	1619	1679	1680	1708	1727	1740
<b>3</b>	1674	1530	1581	1638	1628	1613	1672	1673	1701	1720
<b>4</b>	1699	1667	1519	1570	1626	1615	1600	1658	1659	1687
<b>5</b>	1611	1687	1650	1504	1554	1608	1597	1582	1640	1641
<b>6</b>	1588	1607	1677	1639	1497	1551	1605	1594	1579	1637
<b>7</b>	1492	1594	1612	1680	1646	1508	1562	1616	1605	1590
<b>8</b>	1555	1482	1581	1598	1668	1639	1502	1556	1610	1599
<b>9</b>	1443	1574	1498	1597	1614	1702	1672	1533	1588	1643
<b>10</b>	1364	1431	1560	1483	1581	1589	1676	1646	1510	1564
<b>11</b>	1415	1292	1354	1475	1402	1501	1508	1591	1562	1433
<b>12</b>	<u>1400</u>	<u>1453</u>	<u>1327</u>	<u>1402</u>	<u>1527</u>	<u>1459</u>	<u>1562</u>	<u>1569</u>	<u>1656</u>	<u>1626</u>
	<b>20012</b>	<b>20207</b>	<b>20282</b>	<b>20551</b>	<b>20759</b>	<b>20891</b>	<b>21111</b>	<b>21233</b>	<b>21357</b>	<b>21406</b>

	281	195	75	268	208	132	220	122	124	49
	1.4%	1.0%	0.4%	1.3%	1.0%	0.6%	1.1%	0.6%	0.6%	0.2%

### Enrollment by Level

<b>K-5</b>	9755	9774	9673	9677	9824	9942	10024	10128	10247	10314
<b>6-8</b>	4635	4683	4870	4917	4811	4698	4669	4766	4794	4826
<b>9-12</b>	5622	5750	5739	5957	6124	6251	6418	6339	6316	6266

## Everett Enrollment History (October Headcount)

<i>Birth Data</i>										
Birth Year	<u>2002</u>	<u>2003</u>	<u>2004</u>	<u>2005</u>	<u>2006</u>	<u>2007</u>	<u>2008</u>	<u>2009</u>	<u>2010</u>	<u>2011</u>
City of Everett Births	2102	2007	2197	2276	2338	2450	2566	2260	2227	2166
% of Cohort	66.7%	74.4%	71.2%	64.5%	62.7%	60.9%	62.1%	68.6%	66.0%	72.8%
City of Mill Creek Births					197	203	222	204	219	190
County Births	8344	8592	8675	8924	9070	9570	9795	9237	9001	8925
Pct of Cohort	16.8%	17.4%	18.0%	16.5%	16.2%	15.6%	16.3%	16.8%	16.3%	17.7%

	<u>Oct-07</u>	<u>Oct-08</u>	<u>Oct-09</u>	<u>Oct-10</u>	<u>Oct-11</u>	<u>Oct-12</u>	<u>Oct-13</u>	<u>Oct-14</u>	<u>Oct-15</u>	<u>Oct-16</u>
<b>K</b>	1403	1494	1565	1468	1467	1493	1594	1550	1470	1577
<b>1</b>	1467	1452	1549	1595	1496	1549	1573	1681	1626	1524
<b>2</b>	1491	1490	1425	1502	1542	1473	1519	1612	1697	1669
<b>3</b>	1453	1453	1500	1403	1477	1552	1463	1533	1642	1701
<b>4</b>	1418	1462	1445	1427	1392	1437	1528	1501	1588	1618
<b>5</b>	1395	1426	1481	1425	1424	1341	1421	1549	1515	1591
<b>6</b>	1425	1383	1425	1499	1410	1429	1343	1402	1569	1486
<b>7</b>	1370	1424	1380	1407	1471	1406	1455	1369	1381	1566
<b>8</b>	1443	1370	1426	1379	1403	1437	1407	1451	1373	1424
<b>9</b>	1822	1492	1389	1432	1396	1442	1442	1443	1482	1375
<b>10</b>	1464	1476	1438	1365	1401	1365	1425	1417	1425	1479
<b>11</b>	1373	1666	1384	1365	1313	1309	1285	1350	1322	1363
<b>12</b>	<u>1049</u>	<u>1155</u>	<u>1421</u>	<u>1444</u>	<u>1457</u>	<u>1380</u>	<u>1365</u>	<u>1363</u>	<u>1406</u>	<u>1358</u>
<b>Total</b>	<b>18573</b>	<b>18743</b>	<b>18828</b>	<b>18711</b>	<b>18649</b>	<b>18613</b>	<b>18820</b>	<b>19221</b>	<b>19496</b>	<b>19731</b>

<b>Change</b>	35	170	85	-117	-62	-36	207	401	275	235
<b>Percent</b>	0.2%	0.9%	0.5%	-0.6%	-0.3%	-0.2%	1.1%	2.1%	1.4%	1.2%

### Enrollment by Level

<b>K-5</b>	8627	8777	8965	8820	8798	8845	9098	9426	9538	9680
<b>6-8</b>	4238	4177	4231	4285	4284	4272	4205	4222	4323	4476
<b>9-12</b>	5708	5789	5632	5606	5567	5496	5517	5573	5635	5575

## Projection (Low Range)

<i>Projected Births</i>										
	<u>2012</u>	<u>2013</u>	<u>2014</u>	<u>2015</u>	<u>2016</u>	<u>2017</u>	<u>2018</u>	<u>2019</u>	<u>2020</u>	<u>2021</u>
	2202	2242	2127	2280	2269	2265	2305	2317	2316	2326
	73.4%	72.8%	76.1%	73.8%	74.2%	75.6%	75.1%	75.2%	75.3%	75.2%
	207	195	195	211						
	9226	9406	9524	9766	9791	9871	9952	10035	10040	10067
	17.5%	17.3%	17.0%	17.2%	17.2%	17.3%	17.4%	17.4%	17.4%	17.4%

	<u>Oct-17</u>	<u>Oct-18</u>	<u>Oct-19</u>	<u>Oct-20</u>	<u>Oct-21</u>	<u>Oct-22</u>	<u>Oct-23</u>	<u>Oct-24</u>	<u>Oct-25</u>	<u>Oct-26</u>
<b>K</b>	1616	1632	1618	1683	1683	1712	1731	1744	1744	1749
<b>1</b>	1576	1615	1613	1600	1664	1664	1692	1711	1724	1724
<b>2</b>	1507	1546	1586	1584	1572	1630	1630	1657	1676	1688
<b>3</b>	1649	1492	1526	1566	1564	1550	1607	1607	1634	1653
<b>4</b>	1674	1626	1467	1500	1539	1536	1522	1578	1578	1605
<b>5</b>	1587	1646	1594	1438	1470	1507	1504	1490	1545	1545
<b>6</b>	1564	1567	1620	1567	1417	1453	1489	1486	1473	1527
<b>7</b>	1470	1555	1556	1607	1558	1413	1449	1484	1481	1469
<b>8</b>	1532	1445	1527	1527	1580	1536	1393	1429	1463	1460
<b>9</b>	1421	1535	1446	1527	1527	1596	1552	1407	1443	1478
<b>10</b>	1343	1395	1506	1417	1497	1489	1556	1513	1372	1407
<b>11</b>	1394	1259	1307	1409	1326	1407	1399	1462	1422	1289
<b>12</b>	<u>1379</u>	<u>1418</u>	<u>1280</u>	<u>1340</u>	<u>1444</u>	<u>1366</u>	<u>1450</u>	<u>1441</u>	<u>1506</u>	<u>1465</u>
	<b>19712</b>	<b>19731</b>	<b>19646</b>	<b>19765</b>	<b>19841</b>	<b>19859</b>	<b>19974</b>	<b>20009</b>	<b>20061</b>	<b>20059</b>

	-19	18	-84	119	76	18	115	35	52	-1
	-0.1%	0.1%	-0.4%	0.6%	0.4%	0.1%	0.6%	0.2%	0.3%	0.0%

### Enrollment by Level

<b>K-5</b>	9609	9557	9404	9371	9492	9599	9686	9787	9901	9964
<b>6-8</b>	4566	4567	4703	4701	4555	4402	4331	4399	4417	4456
<b>9-12</b>	5537	5607	5539	5693	5794	5858	5957	5823	5743	5639

## Everett Enrollment History (October Headcount)

<u>Birth Data</u>										
Birth Year	<u>2002</u>	<u>2003</u>	<u>2004</u>	<u>2005</u>	<u>2006</u>	<u>2007</u>	<u>2008</u>	<u>2009</u>	<u>2010</u>	<u>2011</u>
City of Everett Births	2102	2007	2197	2276	2338	2450	2566	2260	2227	2166
% of Cohort	66.7%	74.4%	71.2%	64.5%	62.7%	60.9%	62.1%	68.6%	66.0%	72.8%
City of Mill Creek Births					197	203	222	204	219	190
County Births	8344	8592	8675	8924	9070	9570	9795	9237	9001	8925
Pct of Cohort	16.8%	17.4%	18.0%	16.5%	16.2%	15.6%	16.3%	16.8%	16.3%	17.7%

	<u>Oct-07</u>	<u>Oct-08</u>	<u>Oct-09</u>	<u>Oct-10</u>	<u>Oct-11</u>	<u>Oct-12</u>	<u>Oct-13</u>	<u>Oct-14</u>	<u>Oct-15</u>	<u>Oct-16</u>
<b>K</b>	1403	1494	1565	1468	1467	1493	1594	1550	1470	1577
<b>1</b>	1467	1452	1549	1595	1496	1549	1573	1681	1626	1524
<b>2</b>	1491	1490	1425	1502	1542	1473	1519	1612	1697	1669
<b>3</b>	1453	1453	1500	1403	1477	1552	1463	1533	1642	1701
<b>4</b>	1418	1462	1445	1427	1392	1437	1528	1501	1588	1618
<b>5</b>	1395	1426	1481	1425	1424	1341	1421	1549	1515	1591
<b>6</b>	1425	1383	1425	1499	1410	1429	1343	1402	1569	1486
<b>7</b>	1370	1424	1380	1407	1471	1406	1455	1369	1381	1566
<b>8</b>	1443	1370	1426	1379	1403	1437	1407	1451	1373	1424
<b>9</b>	1822	1492	1389	1432	1396	1442	1442	1443	1482	1375
<b>10</b>	1464	1476	1438	1365	1401	1365	1425	1417	1425	1479
<b>11</b>	1373	1666	1384	1365	1313	1309	1285	1350	1322	1363
<b>12</b>	<u>1049</u>	<u>1155</u>	<u>1421</u>	<u>1444</u>	<u>1457</u>	<u>1380</u>	<u>1365</u>	<u>1363</u>	<u>1406</u>	<u>1358</u>
<b>Total</b>	<b>18573</b>	<b>18743</b>	<b>18828</b>	<b>18711</b>	<b>18649</b>	<b>18613</b>	<b>18820</b>	<b>19221</b>	<b>19496</b>	<b>19731</b>

<b>Change</b>	35	170	85	-117	-62	-36	207	401	275	235
<b>Percent</b>	0.2%	0.9%	0.5%	-0.6%	-0.3%	-0.2%	1.1%	2.1%	1.4%	1.2%

### Enrollment by Level

<b>K-5</b>	8627	8777	8965	8820	8798	8845	9098	9426	9538	9680
<b>6-8</b>	4238	4177	4231	4285	4284	4272	4205	4222	4323	4476
<b>9-12</b>	5708	5789	5632	5606	5567	5496	5517	5573	5635	5575

## Projection (High Range)

<u>Projected Births</u>										
	<u>2012</u>	<u>2013</u>	<u>2014</u>	<u>2015</u>	<u>2016</u>	<u>2017</u>	<u>2018</u>	<u>2019</u>	<u>2020</u>	<u>2021</u>
	2202	2242	2127	2280	2269	2265	2305	2317	2316	2326
	75.6%	74.2%	77.6%	75.3%	75.7%	77.1%	76.6%	76.8%	76.8%	76.7%
	207	195	195	211						
	9226	9406	9524	9766	9791	9871	9952	10035	10040	10067
	18.1%	17.7%	17.3%	17.6%	17.5%	17.7%	17.7%	17.7%	17.7%	17.7%

	<u>Oct-17</u>	<u>Oct-18</u>	<u>Oct-19</u>	<u>Oct-20</u>	<u>Oct-21</u>	<u>Oct-22</u>	<u>Oct-23</u>	<u>Oct-24</u>	<u>Oct-25</u>	<u>Oct-26</u>
<b>K</b>	1665	1665	1651	1717	1717	1746	1766	1779	1779	1785
<b>1</b>	1624	1697	1679	1665	1732	1732	1762	1781	1794	1795
<b>2</b>	1553	1626	1701	1683	1668	1730	1730	1760	1779	1792
<b>3</b>	1699	1569	1637	1713	1695	1678	1740	1740	1771	1790
<b>4</b>	1725	1709	1573	1642	1718	1698	1681	1743	1743	1774
<b>5</b>	1636	1730	1709	1573	1642	1716	1696	1679	1741	1741
<b>6</b>	1612	1648	1737	1715	1581	1656	1730	1710	1693	1755
<b>7</b>	1514	1635	1669	1758	1739	1608	1684	1760	1739	1722
<b>8</b>	1578	1518	1638	1671	1763	1749	1618	1694	1770	1749
<b>9</b>	1464	1613	1550	1671	1705	1817	1802	1667	1746	1824
<b>10</b>	1384	1467	1614	1550	1671	1696	1807	1792	1658	1736
<b>11</b>	1436	1324	1402	1541	1480	1602	1626	1732	1718	1589
<b>12</b>	<u>1421</u>	<u>1490</u>	<u>1374</u>	<u>1466</u>	<u>1612</u>	<u>1556</u>	<u>1684</u>	<u>1709</u>	<u>1820</u>	<u>1806</u>
	<b>20311</b>	<b>20691</b>	<b>20934</b>	<b>21365</b>	<b>21723</b>	<b>21984</b>	<b>22326</b>	<b>22546</b>	<b>22751</b>	<b>22858</b>

	580	379	243	431	358	261	341	220	205	107
	2.9%	1.9%	1.2%	2.1%	1.7%	1.2%	1.6%	1.0%	0.9%	0.5%

### Enrollment by Level

<b>K-5</b>	9902	9996	9950	9993	10172	10300	10375	10482	10607	10677
<b>6-8</b>	4704	4801	5044	5144	5083	5013	5032	5164	5202	5226
<b>9-12</b>	5705	5894	5940	6228	6468	6671	6919	6900	6942	6955



# School Projections

Projections by school and grade level were also completed and balanced to the overall District medium range projection. School grade level projections are generally less accurate than District grade level projections due to the smaller numbers used to estimate trends, and because program changes and student choice can affect the allocation of students independent of demographic trends. To the extent possible these projections take account of waiver information, especially at the entry level grades. At the other grades it is assumed that students who attend a school outside of their neighborhood will remain at that school in subsequent years.

School enrollments were projected based on a consideration of the current enrollment, each school's share of the entry grade enrollment (K, 6, and 9), and based on a consideration of how continuing students move up through the grades. At the secondary level, consideration was also given to how students feed from elementary into middle school, and from middle school into high school. The trends of the past three years were used to project enrollment in 2017. Beyond that point, we used a six year average which better accounts for the average amount of growth a school might see over time. These numbers were then adjusted to account for projected changes in population and housing for different service areas. These adjustments were based on projected changes in new home development derived from an examination of New Home Trends data and projected population growth for neighborhoods obtained from the Puget Sound Regional Council.

## Projection Summary by School

	Oct11	Oct12	Oct13	Oct14	Oct15	Oct16
Cedar Wood	548	561	581	629	680	716
Emerson	599	592	624	605	604	633
Forest View	538	536	575	613	674	717
Garfield	331	364	374	377	386	428
Hawthorne	467	456	455	454	443	448
Jackson	359	355	364	376	369	351
Jefferson	545	526	558	554	558	577
Lowell	476	490	468	478	481	475
Madison	464	434	438	438	458	432
Mill Creek	684	652	658	678	656	672
Monroe	470	534	546	538	551	559
Penny Creek	725	732	678	728	721	748
Silver Firs	519	516	529	528	486	461
Silver Lake	481	504	511	528	673	643
View Ridge	492	479	537	573	567	572
Whittier	415	384	394	446	467	491
Woodside	631	668	718	800	676	681
Other	54	62	87	83	88	76
<b>Totals</b>	<b>8798</b>	<b>8845</b>	<b>9095</b>	<b>9426</b>	<b>9538</b>	<b>9680</b>

*Numbers may not add to exact totals due to rounding*

## Medium Growth Projections (2017-2026)

Oct17	Oct18	Oct19	Oct20	Oct21	Oct22	Oct23	Oct24	Oct25	Oct26
757	740	731	731	725	719	724	732	745	753
653	637	616	610	616	620	629	638	648	654
745	740	717	712	711	717	722	733	742	747
426	427	421	421	419	434	422	410	403	397
446	427	411	409	410	414	420	427	435	439
330	344	349	355	375	390	392	393	395	395
577	584	580	576	590	593	602	612	621	627
464	467	466	462	470	486	494	500	508	512
417	411	399	395	392	402	409	416	420	427
670	680	676	671	695	694	705	715	728	734
554	576	577	595	625	633	643	653	663	670
753	747	730	716	730	747	745	745	748	747
461	450	445	444	450	456	461	465	473	474
650	667	673	670	658	664	665	673	681	686
577	572	561	568	587	581	588	596	605	610
494	515	528	521	532	542	549	555	562	564
699	709	713	741	758	767	771	778	785	791
83	80	81	80	82	82	84	86	87	87
<b>9755</b>	<b>9774</b>	<b>9673</b>	<b>9677</b>	<b>9824</b>	<b>9942</b>	<b>10024</b>	<b>10128</b>	<b>10247</b>	<b>10314</b>

## Projection Summary by School

## Medium Growth Projections (2017-2026)

	Oct11	Oct12	Oct13	Oct14	Oct15	Oct16	Oct17	Oct18	Oct19	Oct20	Oct21	Oct22	Oct23	Oct24	Oct25	Oct26
Eisenhower	882	866	846	818	837	863	905	915	931	934	937	927	925	953	962	969
Evergreen	1045	1026	980	931	968	1007	1032	1012	1044	1048	1004	958	947	965	974	985
Gateway	734	779	780	809	853	895	906	929	986	1009	976	942	925	924	923	927
Heatherwood	919	901	890	970	955	965	986	1009	1036	1034	1011	1021	1044	1077	1066	1069
North	677	672	671	658	685	722	779	790	843	862	855	822	801	817	841	846
Other	27	28	40	36	25	24	28	28	30	30	30	28	28	30	29	30
<b>Totals</b>	<b>4284</b>	<b>4272</b>	<b>4207</b>	<b>4222</b>	<b>4323</b>	<b>4476</b>	<b>4635</b>	<b>4683</b>	<b>4870</b>	<b>4917</b>	<b>4811</b>	<b>4698</b>	<b>4669</b>	<b>4766</b>	<b>4794</b>	<b>4826</b>
CHS	1856	1843	1805	1788	1814	1774	1798	1783	1777	1840	1890	1930	1982	1958	1950	1932
EHS	1423	1429	1400	1418	1430	1459	1442	1509	1507	1569	1615	1650	1694	1672	1668	1654
JHS	1926	1919	2014	2104	2160	2133	2157	2233	2235	2318	2377	2429	2488	2454	2441	2418
Sequoia	324	273	267	235	209	195	206	206	200	211	221	221	232	233	237	240
Other	38	30	31	28	22	14	19	19	20	19	21	21	22	22	20	22
<b>Totals</b>	<b>5567</b>	<b>5494</b>	<b>5517</b>	<b>5573</b>	<b>5635</b>	<b>5575</b>	<b>5622</b>	<b>5750</b>	<b>5739</b>	<b>5957</b>	<b>6124</b>	<b>6251</b>	<b>6418</b>	<b>6339</b>	<b>6316</b>	<b>6266</b>
<b>Totals</b>	<b>18649</b>	<b>18611</b>	<b>18819</b>	<b>19221</b>	<b>19496</b>	<b>19731</b>	<b>20012</b>	<b>20207</b>	<b>20282</b>	<b>20551</b>	<b>20759</b>	<b>20891</b>	<b>21111</b>	<b>21233</b>	<b>21357</b>	<b>21406</b>